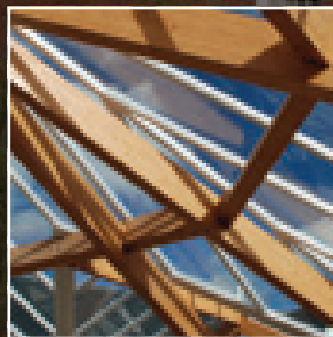
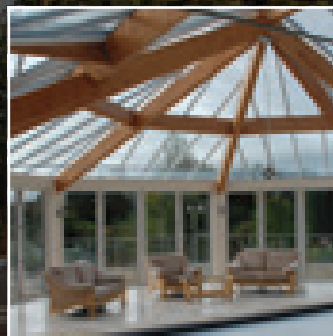


quality
speaks for itself



For more information on
the K2 designer collection,
please visit
www.thek2collection.co.uk

Copyright © 2013 K2 Conservatories.
All rights reserved. No part of this document may be
reproduced, amended or extracted.

K2 Conservatories is a division of Synseal Extrusions Ltd.

S/C: K2-COLDES B JUN13

the 
designer
collection

conservatories • orangeries • lanterns • rooflights



conservatories

blending in

classic

outside in

tranquility

a perfect match

contemporary

keep in with the period

orangeries

true style

lanterns & rooflights

Created with you – the homeowner – in mind, the Designer Collection shows a range of conservatory installations that have been designed and built utilising the K2 conservatory roof and portal system.

Our roof system will give your conservatory a stunning look that will last for years to come and will undoubtedly enhance any property. The projects shown here have been installed via a wide network of installers in the UK and abroad.

Whether you live in a contemporary building or a conservation area, there's something for you.

We hope the following pages will inspire you and will help you design your dream room.



conservatories

'A building with glass walls and roof, for the cultivation and exhibitions of plants under controlled conditions'

blending in

classic

outside in

tranquility

a perfect match

contemporary

keep in with the period

orangeries

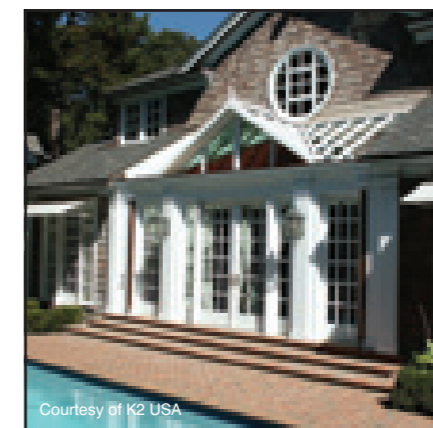
true style

lanterns & rooflights

the  designer
collection



Courtesy of Speed Conservatories



Courtesy of K2 USA

conservatories

Let your new conservatory change the way you use your home.

You can be certain that the range of conservatories available have been exceptionally engineered to provide you with a beautiful room that will give years of enjoyment.

Using the Traditional/Lean-to, Gable, Victorian and Georgian styles, as well as bespoke designs, there will be a conservatory to fit every type of home, whether contemporary or period.

Suitably fitted with Celsius high performance glass your conservatory will be usable all year round and will have a unique, distinctive look.

the  designer collection



blending in

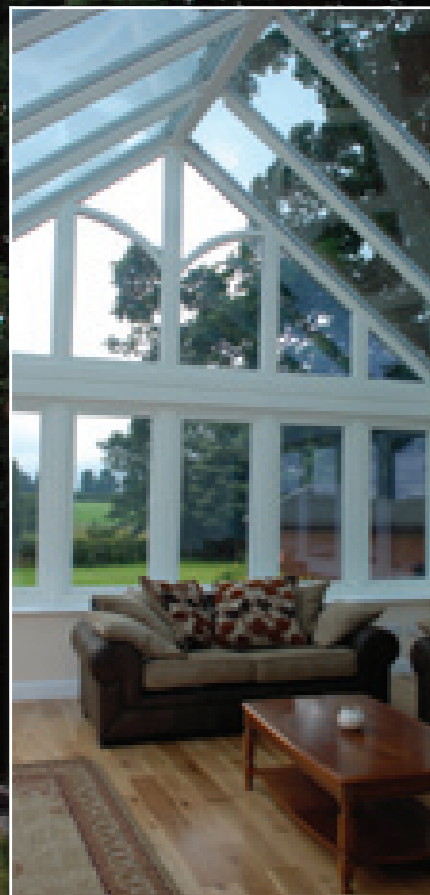
This installation had to blend in perfectly with the existing property.

Situated in the Yorkshire Moors, this airy conservatory was highly specified to resist the local weather conditions. It features K2's aluminium roof, powder coated to match the existing house windows.

Use of reclaimed stones blends the dwarf wall into the house.

Photos courtesy of Northwest Rooftech

the  designer
collection



the  designer
collection

classic

The simple lines of this gable conservatory are the perfect addition to the property.

Its classic design uses high performance glass to ensure year round use, and bi-folding doors for easy access to the patio area.

It has a modern feel on the inside, while at the same time fitting in perfectly with this Cheshire farmhouse. The high ceiling keeps the airy feel afforded by the large bi-folding doors.

The finish is white woodgrain for a softer appearance, while the blue tint is indicative of Celsius glass, giving a striking and stylish look.

Photos courtesy of K2 Architectural

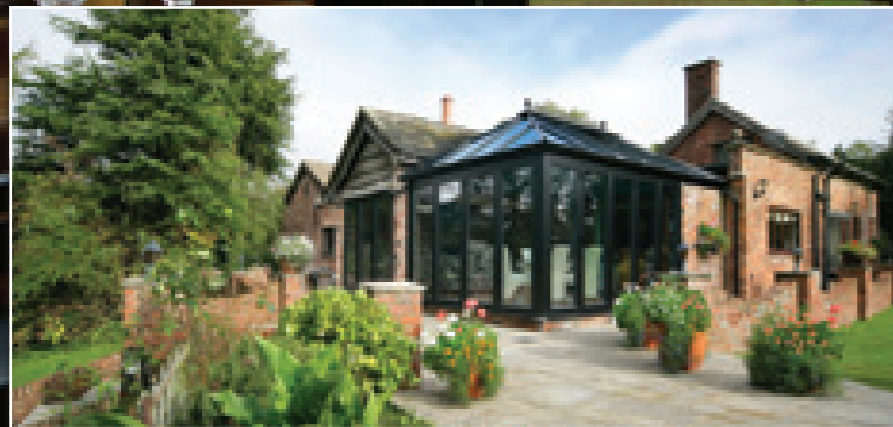
outside in

This superb conservatory is an excellent example of what can be achieved using the latest systems and technologies available.

Blending in perfectly with its surroundings, this contemporary room offers its owners both additional living space and an outdoor area.

Using a bespoke black aluminium roof, the feeling of space is further enhanced by the use of colour matched bi-folding doors. These can be opened to the full width of the conservatory, turning it into an elegant garden room.

Photos courtesy of Crystal Windows



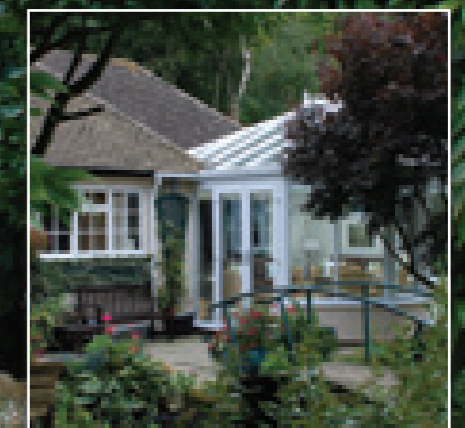
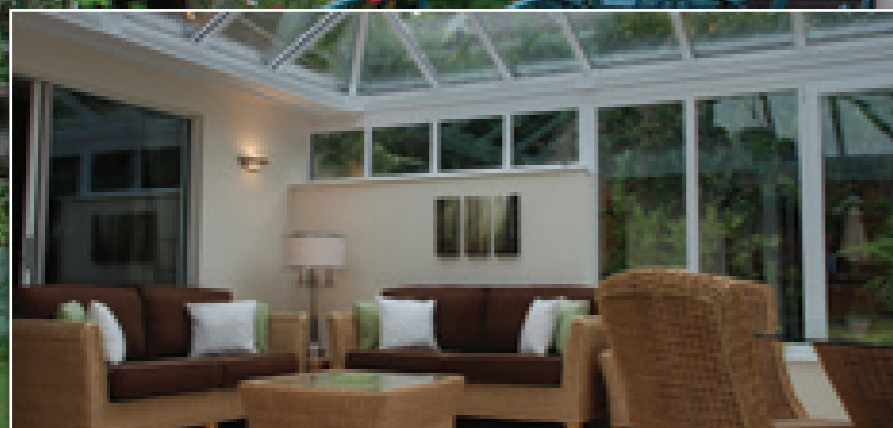
the  designer
collection

tranquility

Designed to provide a quiet retreat, this Victorian conservatory is an integral part of the home, thanks to the internal sliding doors.

The addition of a wall area along one side gives it a cosy feel, and more flexible furnishing options. The large picture windows allow as much light as possible to come through.

Photos courtesy of Britelite Windows



the  designer
collection



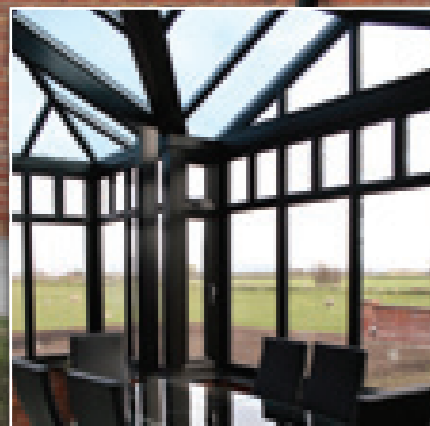
a perfect match

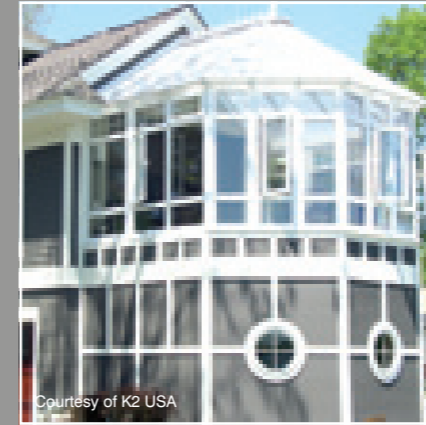
This stunning looking conservatory is a fully bespoke design.

The owner was looking for a contemporary feel, and required the structure's colours to match the black windows already in place.

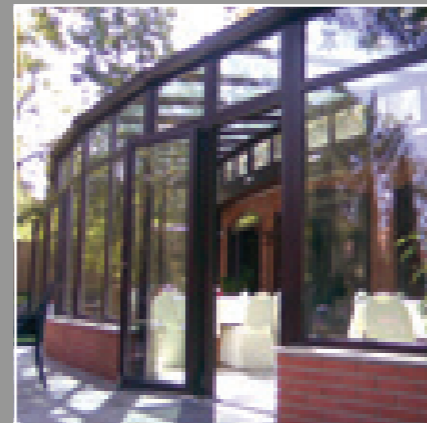
Thanks to the aluminium roof, a perfect colour match was possible. Fitted with high performance glass, complemented by a portal system to ensure structural integrity, this conservatory ticked all the boxes.

The addition of an under floor heated system makes it a perfect room to relax all year round, looking over the Lancashire countryside.

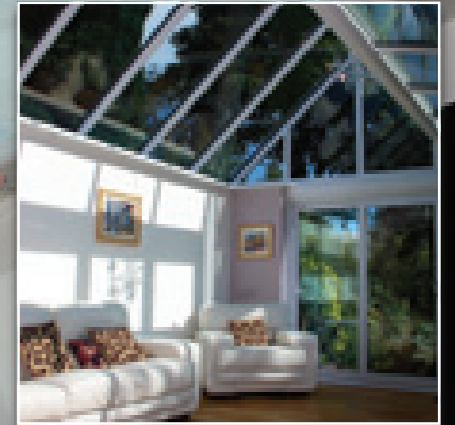




**“dare to be different,
let your conservatory reflect your tastes,
make a statement of style.”**



the  designer
collection



contemporary

This conservatory truly reflects the growing popularity of open plan modern living, creating an attractive entertainment space.

Its unusual non-symmetrical design illustrates what can be achieved with imagination and contemporary styling. The striking bi-colour finish combined with large expanses of glass transforms the property's appearance.

Photos courtesy of Heaton Conservatories

the  designer
collection

keep in with the period

The owner of this Grade II listed building in Alloa, Scotland, had to follow strict guidelines if he was to reach his ambition of building his dream conservatory.

The frames had to be constructed in wood, but the K2 aluminium roof was deemed acceptable by Historic Scotland.

Powder coated in white, with a white woodgrain finish on the inside and glazed with Celsius high performance glass. It also features a sculpted aluminium gutter to enhance the period look.

As many other conservatory owners find, this is now the most popular room in the house.





Courtesy of Crystal Windows



Courtesy of ETA Yapi, Turkey



Courtesy of SWC

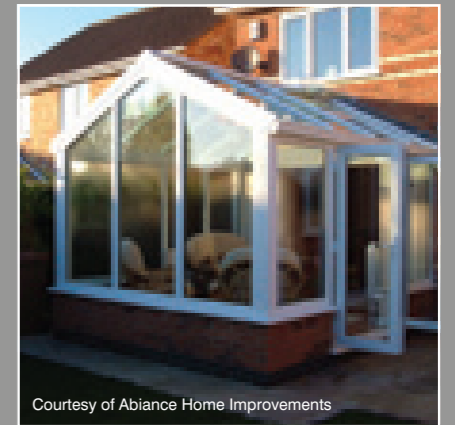
***“break from the norm,
use colour to make your conservatory
stand out from the crowd”***



Courtesy of K2 USA



Courtesy of Cardiff Glass



Courtesy of Abiance Home Improvements



conservatories

blending in

classic

outside in

tranquility

a perfect match

contemporary

keep in with the period

orangeries

true style

'A place where oranges are grown; a plantation of orange trees in warm climes or a greenhouse in colder areas'

lanterns & rooflights

the  designer
collection



Photos courtesy of SWC & Hawthorn Windows



orangeries

For those wanting a little more than a conservatory, the orangerie is the ideal solution.

Originally designed to house and grow exotic fruits and plants, orangeries became a symbol of wealth and status.

Nowadays they provide a beautiful alternative to the traditional conservatory.

Designed with solid build columns, a partial solid ceiling, and the inclusion of a roof light, they are a well balanced mix of traditional build extensions and conservatories.

This choice of style ensures that the room forms - and feels like - an integral part of the home, blending light with reassuring sturdiness.

the  designer
collection

true style

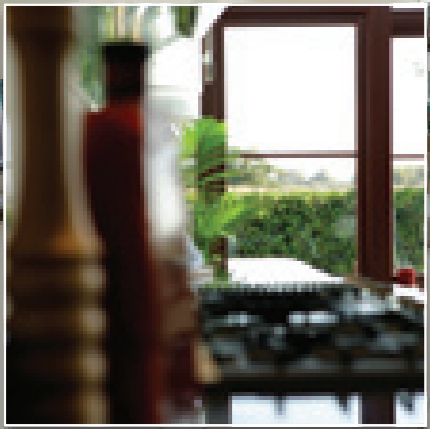
Looking to add living space to your home, but with something a little more substantial than a fully glazed room? This is a stunning example of what an orangery can bring.

Clearly not a full extension, it is however a stylish addition to the house.

Internally, the wide ceiling overhang emphasises a solid feel and the principles of the orangery really come through.

This orangery optimises the open plan requirements of today's modern living.

Photos courtesy of Charles Christianson





conservatories

blending in

classic

outside in

tranquility

a perfect match

contemporary

keep in with the period

orangeries

true style

'a small window or varying design, set into a roof for additional light or ventilation'

lanterns & rooflights

the  designer
collection



lanterns & rooflights

Traditional extensions can often take away valuable natural light from the property.

Lantern roofs, that are traditionally used to add a touch of grandeur to conservatories, have become an ideal solution to this problem.

Sitting on top of the roof, lanterns are a glass roof elevated with side frames, often including vents for improved temperature control.

Alternatively, you can opt for a rooflight which sits flat against the roof surface.

A lantern or rooflight will definitely become an eye catching architectural feature for your home.



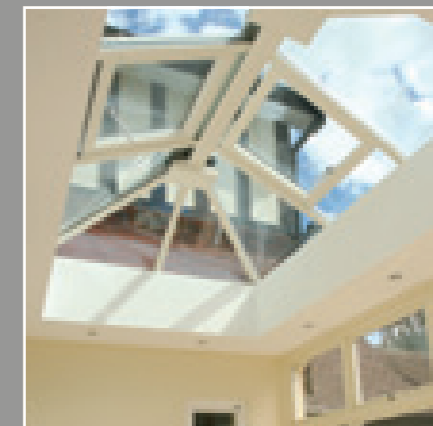


Courtesy of Windowcare

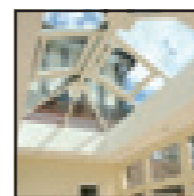
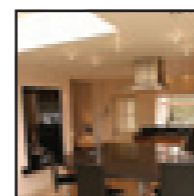
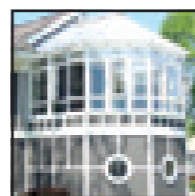
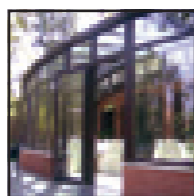
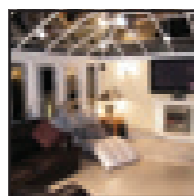
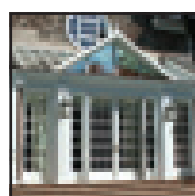
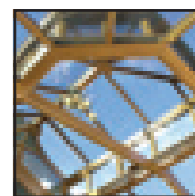
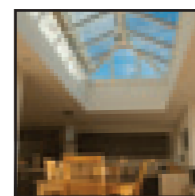
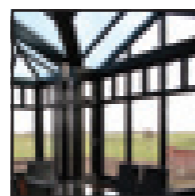
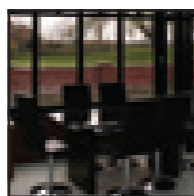
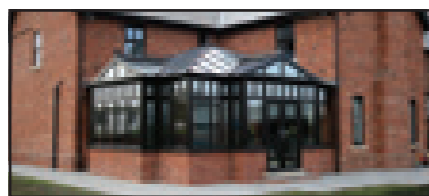
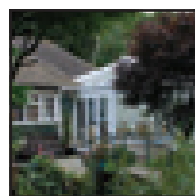
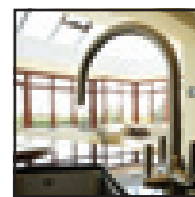
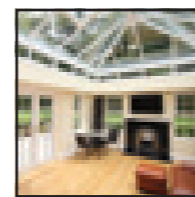
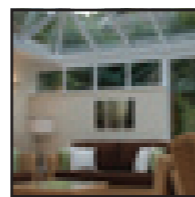
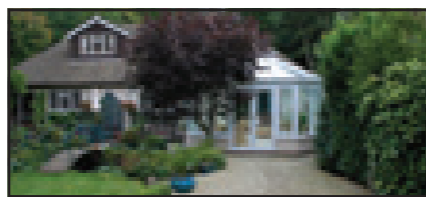
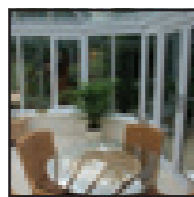
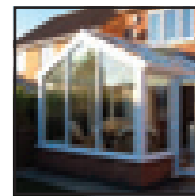
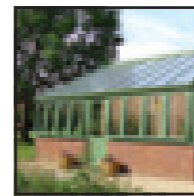
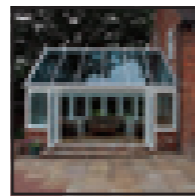
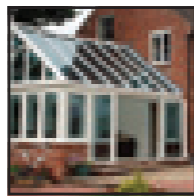
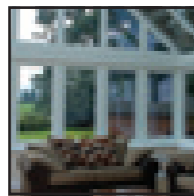
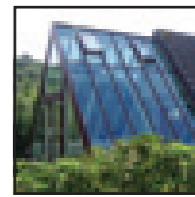
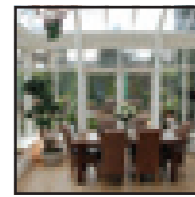
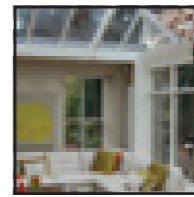
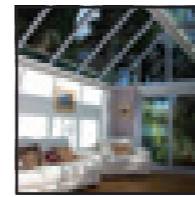
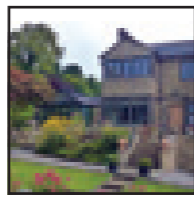
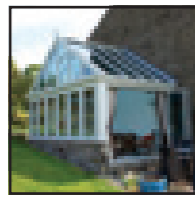
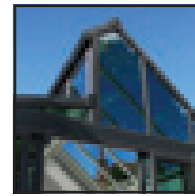
*“**simply stunning,**
install a lantern roof to see your home
in a **whole new light**”*



Courtesy of Charles Christianson



the  designer
collection



the [®] designer collection